

ICP *INDUSTRIAL CERAMIC PRODUCTS, INC.*

WELCOME

Corporate History

1936 - INDUSTRIAL CERAMIC PRODUCTS, INC (ICP) was founded to manufacture pottery pins for the dinnerware industry. The original factory was located on approximately 2 acres on W. 5th Ave. in Columbus, Ohio.

1941 - Construction of a second second tunnel kiln and plant expansion.

1945 - Decline of dinnerware industry

1950 - Additional product lines developed.

1960 - Continued Expansions

1975 - Major fire destroys 75% of company

1976 - Rebuilding and recovery

1982 - Major recession with all employees furloughed

1983 - Corporate recovery and growth

1995 - Break ground for new plant in Marysville

1997 - Production begins in Marysville

1998 - Marysville expands / Columbus facility closes

2001 - Major recession

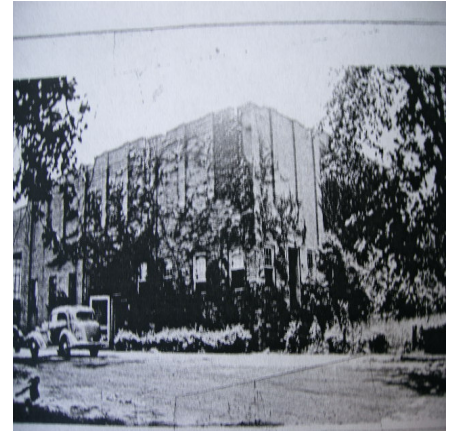
2003 - Recovery and growth

2005 - Acquisition of additional property

2008 - Recession

2010 - Recovery and growth

2012 - ICP transitions to 100% Employee-Owned Company

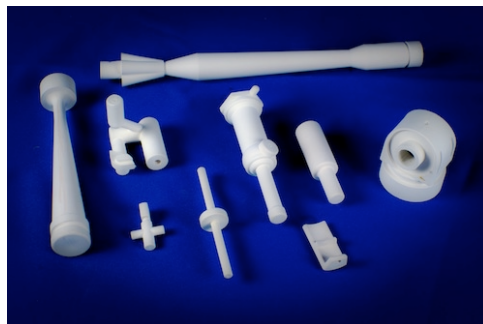


ICP circa 1940

2013 - 2017 - GROWTH!

TODAY - ICP manufactures a diverse range of products for the metalcasting industries in our 110,000 sq. ft. manufacturing and technical facilities. About 15% of production is exported to customers worldwide including China, India and Mexico. ICP also imports and distributes complimentary products.

TOMORROW - Continued development of processes and materials to manufacture value added ceramic products. Expansion into new products, new markets and new technologies.



Injection Molded Products