



INDUSTRIAL CERAMIC PRODUCTS, INC.

Duck Feet

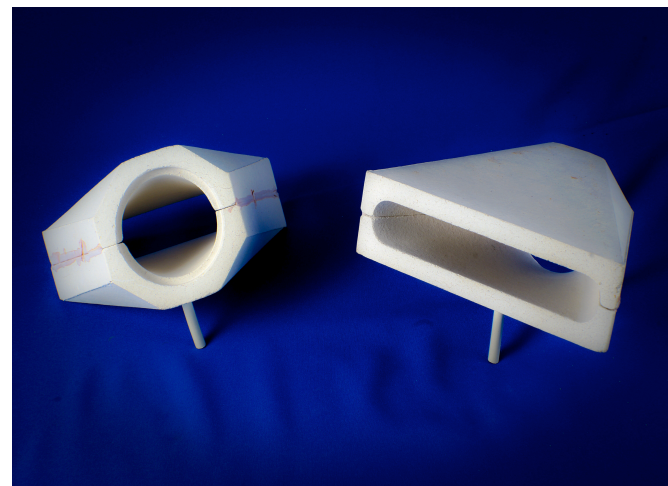
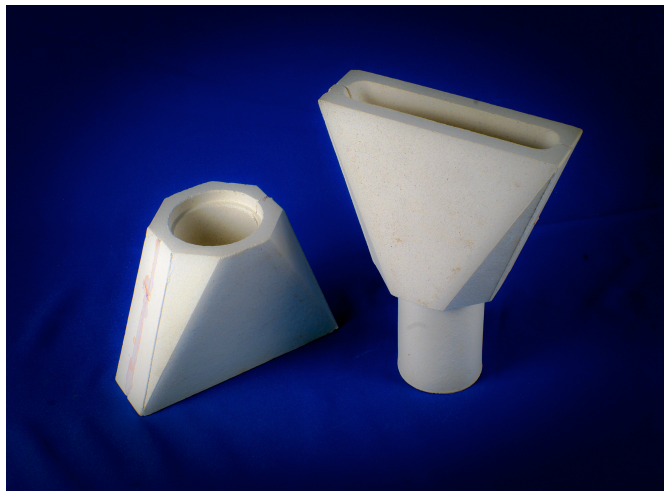
ICP Duck Feet are used as casting ingates. They are designed to reduce erosion on the surfaces of cores and molds by allowing the metal to calmly feed into the mold, thereby reducing turbulence.

Another benefit is when these ingates are removed (knock-off). The casting finish is better at the ingates due to the sharp clean edges of the ICP Duck Feet.

Benefits of the ICP Duck Feet Ingates Include:

- * Erosion Reduction
- * Better Casting Finish
- * Fewer Inclusions
- * Less Gate Grinding

ICP Duck Feet are available in both mullite and fused silica compositions and accommodate 2 1/2" and 3" tubes.



Samples are available for testing.

To place your order:

Phone (800) 427-2278 Fax (937) 644-2646 www.industrialceramic.com